

To the
- S.C. for University Racers

For information to:
- Gian Franco Kasper, FIS President
- Sarah Lewis, FIS Secretary General

INTERNATIONAL SKI FEDERATION

Blochstrasse 2
3653 Oberhofen/Thunersee
Switzerland
Tel +41 33 244 61 61
Fax +41 33 244 61 71

Oberhofen, 10.07.2019

**Minutes Meeting Sub-Committee for University Racers,
Hotel Croatia, Thursday 30th June 2019**

Dear Ski friends,

we take pleasure in sending you today the Minutes of the meeting of the Sub-Committee for University Racers, held in Cavtat-Dubrovnik (CRO).

Thank you very much for your valuable cooperation.

Kindest regards,



Urs Schuepbach
Chairman Sub-Committee for University Racers

**INTERNATIONAL SKI FEDERATION
Sub-Committee for University Racers**

**Invitation Meeting Sub-Committee for University Racers
10:00 – 12:00 hrs, Conference Room “Salon 5”**

AGENDA

1. Welcome and opening of the meeting
2. Roll call participants & guests
3. Approval of the agenda
4. Approval of the minutes of the meeting at Zurich, September 2018
5. Report to Season 2018/2019 from Chairman and Committee Members
6. Report Winteruniversiade 2019 Krasnojarsk and update WU 2021 Lucerne
7. FIS UNI Race Calendar 2019/2020
8. Rules FIS UNI 2018
8. Miscellaneous, questions
9. Next meeting, Zurich (SUI), 1st – 5th October 2019

1. Welcome and opening of the meeting

The Meeting started at 10.15 by Chairman Urs Schüpbach welcomed all members from the FIS UNI Committee and guests which are interested in supporting University Ski Sports:

- Matjaz Kranjc, Chairman Alpin Skiing FISU
- Karl Frehsner, FIS Homologation
- Members of OC Winteruniversiade Krasnoyarsk 2019

2. Roll call participants & guests

The list of presence was distributed for committee members and guests The committee was represented by the following members:

Atakan Alaftargil (TUR), Radovan Cagala (SVK), Kiyotaka Kato (JAP), Vyacheslav Kozlov (RUS), Darryl Landstrom (USA), Julie Lemieux (CAN), Werner Margreiter (AUT), Franz Steinle (GER), Urs Schüpbach (Chairman, SUI).

3. Approval of the agenda

The current agenda was approved. USA proposed to discuss the future Dual Slalom Race Formula under point 9). Miscellaneous

4. Approval of the minutes of the meeting at Hotel Hilton, Zurich (SUI) 27th September 2018

The minutes from the last meeting in Zurich were unanimously approved.

5. Report to season 2018/2019

For the second time we passed a very successful season with exactly 100 FIS UNI Races all over the world. 52 GS, 46 SL and 2 SG on 24 different sites as USA/CAN, Europe (6 nations) and Japan. Only 6 competitions had to be cancelled. This is a great footprint from University Alpine Ski sports! Congratulations and many thanks to all organizers, athletes, officials for this great performance. On the top of our events die Winter Universiade in Russia (Siberia) : the best students were competing in 8 individual and one team event.

Our flagship are the FIS UNI races series in North America. On one side we realized a fantastic quality at many events with very low penalties between 9 and 12 FIS points. On the other side a broad number of nations in the top ten ranking lists. Several times 6 or 7 nations in Top 10!

Great work from course setters due the fact that we had much less DNF in SL than in average FIS races! Perhaps students use their mental strength better than non-students

6. Report Winter Universiade 2010 Krasnojarsk / up date WU Lucerne 2021

The 29th Winter Universiade is one of the greatest and best organized Winter Sports events in FISU history. The athletes profit from best prepared slopes und venues on highest competition level. These competitions have continental cup status and many athletes competing in World Cup and with experience on WCS or WOG were surprised about the perfect races. Many thanks to Vyacheslav Kozlov from OC Krasnojarsk and Andrey Obyskalov (KAZ) for the support from OC Almaty WU 2017. The races in siberia were supported by TD FIS Viktor Gichev (BUL), Sawano Hiroshi (JAP) and Matjaz Kranjc (SLO) as Technical Chair Ski Alpine from FISU.

The FIS TD committee announced the two TD FIS for the 30th Winter Universiade (20th to 30th January 2021) in Lucerne / Switzerland. The proposals from our committee were accepted with one FIS TD from FRA and one from USA. The organizing committee WU 2021 was not present at the meeting. Chairman Urs Schüpbach presented a short overview about the Alpine Ski Program at Hoch-Ybrig. Last season Swiss NC were successfully organised on this small but beautiful winter resort. Next winter some more test events in Super G and GS/SL are part of the program to be ready in 2021 for hosting the best students in alpine skiing.

7. FIS UNI Race Calendar 2019/2020

Urs Schüpbach informed the Committee that FIS UNI competitions on weekend do have much more participants as during the week and that there is still enough space in the Calendar for races in December. Furthermore as a pre-event for Winteruniversiade 2021, the Swiss FIS UNI races will stay at Hoch Ybrig at 11/12 of January 2020.

8. FIS UNI Rules / Appendix 1 for 2019/2020

The FIS UNI Rules 2018/19 needs no adaptations for next season. The new age limit from FISU is now included in our FIS UNI specifications.

Pt 2.2.1: to respect scholarship programmes in USA we will not change the age limit for FIS UNI races with actually 16-28 years up to season 2020/21.

The Appendix I for Season 19/20 could not be generated. FIS IT department changed software applications to extract the results from the host server with all competitions. Our friend Roman Baily (FRA) has actually no access to calculate the overall ranking FIS UNI Europe Cup. We stay in close contact with FIS HQ (Director Andreas Wenger) to establish an official account to produce the results for FIS UNI Races in future. Next overview will be presented at autumn meeting in Zurich.

9. Miscellaneous

One Participant asked the reason about different rules for FIS UNI Races and Winter Universiade competitions. For FIS UNI Races we have since 1983 special rules with some specifications on top the ICR rules. For Universiades the council of FISU (Fédération Internationale du Sport Universitaire) is the board to decide about nation quotas, age limits, accreditation rules or qualifications for competitions.

Richard Rokos (USA / Coach at Colorado University) presented a new format for «Parallel Paneled Slalom» Events. He explained the history and about first experiences during last season in USSA college race series. The new format will be tested next season. More details about this new modified FIS Parallel Slalom you see in the attachment. All members were asked to control the address list in the new FIS booklet with all committee members. There are still some invalid email or National Federations with N.N. for the member.

10. Next meetings

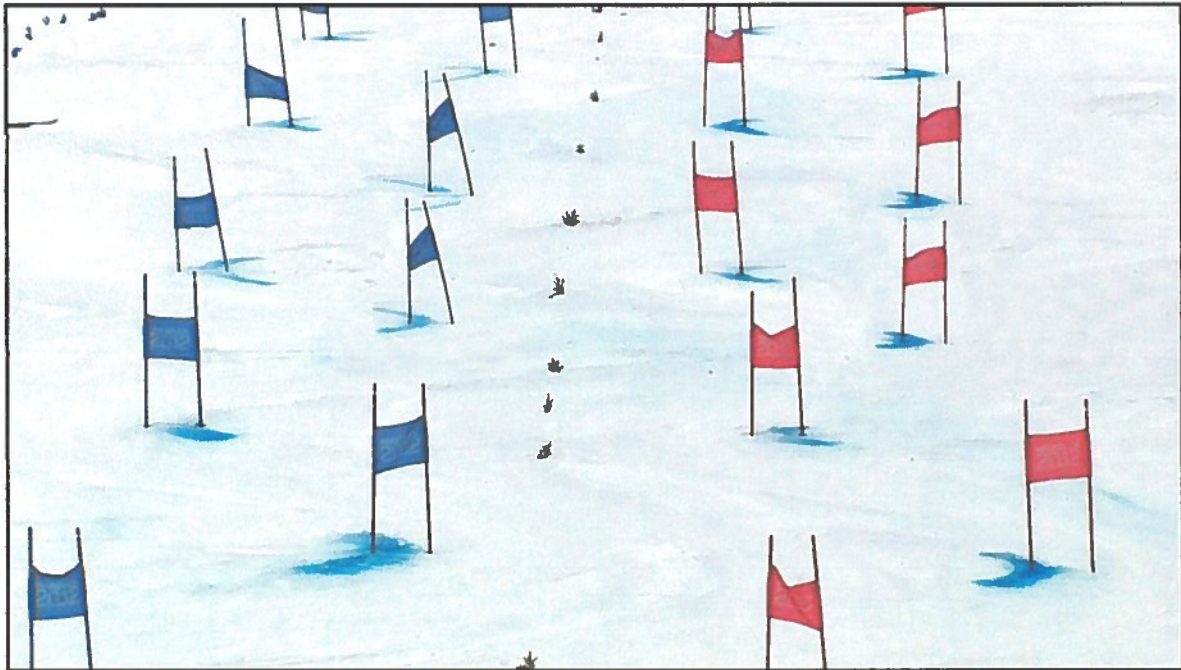
The next meeting will take place at FIS Autumn Meeting in Zurich, at **Thursday, 3rd October 2019**.

Meeting closed by chairman at 12.00 am.
Minutes prepared by U. Schüpbach, Chairman (SUI)

Parallel Paneled Slalom

Objectives:

- #1 to provide racers the feeling of excitement that results from head to head competition**
- #2 to enhance alpine ski racing appeal by pitting racer's against one another in a head-to-head format.**
- #3 to make ski racing a little different, exciting, fun and spectator friendly**
- #4 to expedite the speed of the race execution (two racers at the time)**
- #5 to provide an alternative to assist in the development of junior alpine ski racer development.**

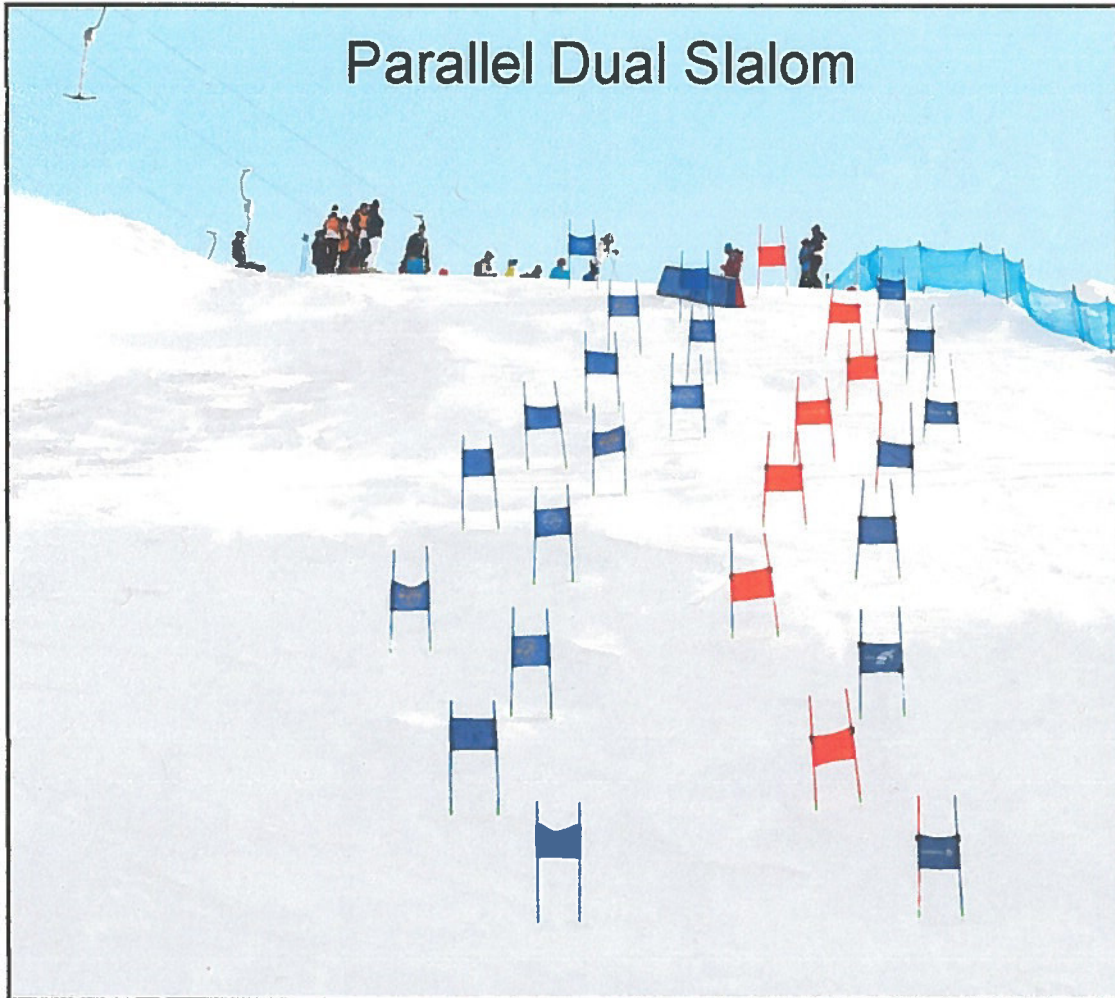


Overview:

This is a modified version of the FIS parallel slalom. It is not a single elimination format rather it is to provide the maximum number of runs to the most athletes.

This “pro” start dual format is just to is intended to be a simplistic as possible in an effort to reach the desired objective outlined above.

It is designed to be conducted with from 1 to 4 heats where each heat consists of 2 runs by each athlete (a run on the red course and a run on the blue course). The number of heats can vary based on the number of athletes or the allotted time available or both. In the final analysis the sum total of the 1-2-3-4 heats (two, four, six, eight runs determines the winner.



The Parallel Slalom Event

Definition

The parallel race is a competition where two competitors race simultaneously side by side down courses. The setting of the courses, the configuration of the hill and the preparation of the snow are to be as identical as possible. The race could be sanctioned for two, three or four heats based on the number of race entries.

Vertical Drop

The vertical drop of the course should be between 80 and 120 m. There should be between 20 and 30 gates, not counting the start and finish.

Choice and Preparation of the Course

1. Choose a slope wide enough to permit two courses safely, preferably slightly concave (permitting a view of the whole course from any point). The terrain variations must be the same across the surface of the slope. The course layouts must have the same profile and the same difficulties. For junior skiers there should be no jump.
2. Over the full width of the chosen slope, the (snow) surface should be consistently hard, and must offer equal race conditions on both courses.
3. The course should be entirely closed off by B-netting. It is recommended to fence off reserved places intended for trainers, competitors and servicemen.

The Courses

1. Each course is designated by a series of gates, each gate is composed of two slalom poles with a GS gate panel stretched between them and fastened in such a way so as to tear or break away according to FIS specifications,
2. Poles and panels are red for the course on the left and blue for the other course on skiers right. The bottom of the panel must be approx. 1 m above the snow.
3. The same course setter establishes the courses and makes sure they are identical and parallel. The course setter must ensure that the course flow is smooth and that there is variety in the curves (very pronounced curves) and that the course causes rhythm changes. In no case should this event resemble a long straight run from top to bottom.

4. The first gate in each course should be placed no less than 8m than 10 m from the start. Distance between consecutive gates on the same course should be no less than 10m and no more than 15m in a parallel slalom. (For a GS, no less than 20m and no more than 25m)
5. The separation between courses must not be less than 8m.
6. Shortly before the finish line, after the last gate, the separation between the two courses must be well marked so that they direct each competitor towards the middle part of the respective finish.

Distance between the Two Courses

1. The distance between two corresponding gates (from turning pole to turning pole) should be no less than 8m and no more than 10m.
2. The distance between the starting gates should be the same as between the two courses.

Start

1. Start Gates

The distance between the starting gates should be the same as between the two courses.

2. Start Intervals

If the start takes place at irregular intervals, the chief of timing and calculations or his assistant tells the starter when each competitor should start, in agreement with the Jury. Otherwise, the competitors on the two courses must have passed the finish line before the next competitors starts.

3. Start control

The Jury and the starter together will control the start. The start signal can only be given after the Jury has given the competitors permission to start. Any starting system can be employed provided that the system guarantees a simultaneous start.

False Starts

If the competitor(s) goes through the gate before the start command, the starter will call "BACK" and the competitors are restarted.

Start Command

Before the starter gives the command of "Ready - Set" he must first ensure that the competitors are ready. The starter then commences a countdown of "3-2-1-GO."

Finish

The finish areas must be symmetrical. The line into the finish should direct the competitor to his/her center of their respective finish lines. It is necessary to set up visually separate finish approaches and to keep the courses separated after the finish line.

Jury and Course Setter

The Jury consists of as follows:

1. The Technical Delegate
2. The Referee
3. The Chief of Race

The course setter is designated by the competition Jury (if he/she is not chosen by the FIS). Before setting the parallel course, he/she should conduct an inspection and study of the hill in the presence of the Jury and those responsible for the course.

The course might be reset after the first, second or third heat by jury decision. Subsequent heat course resets should be done by re-directing the gates to maintain the characteristics of the first course.

Timing

Each run of each competitor is independently recorded

Execution

Race is determined by total time of two or more heats. Each heat between two competitors consists of two runs, the two competitors change courses for the second run of the heat.

Seeding procedure

When appropriate, the first run of first heat will be generated by direct order of FIS or USSA slalom points. Lowest point holder will start on red course, second lowest point holder on blue course, third in point order on red course.

For a non-sanctioned event, competitors should be paired according to ability and past performance in descending order. Fastest against the fastest, etc.

First heat

Pairs will start by the order of the board or start list with odd number on the red course and even number on the blue course. Odd number of competitors in the field in will start solo on the red course.

If a DNF or DSQ occurs to one of racers, the racer will remain in the race on a "onetime forgiveness" rule, however his recorded time will be a time of his opponent + a 2.00 second penalty. If neither racer finishes, there will be a re-run and they will be inserted in to next available interval without penalty.

Technical Disqualification

A cross-block technique or any attempt of opponents at interference, unsportsman like behavior or anything that would be qualified as unsafe is strictly prohibited and it is a jury liberty to distinguish between accidental and an intentional violation of this rule. A penalty of +2.00 seconds of opponent's time would be imposed on violator and he/she can continue in the race.

If both racers on the same run violate above provisions the time of faster racer of previous couple would be used as a base +2.00 seconds penalty for both violators and they both can continue in the race. More than one violation in two-heat, two violations in three heat and three violations in four-heat race would result in disqualification from the race.

Second (third, fourth) heat

Base on number of participants the race might be set for two, three or four heats (up to 8 runs/competitor).

1. The sum of time of two runs of first heat will determine the start order of second heat.
2. In a three-heat race third heat start order will be determined by sum of times of first two heats.
3. In a four-heat race the fourth heat start order will be determined by sum of times of previous three heats.
4. Entire field will reverse for a first run of second heat with the fastest pairs always starting last. The same procedure remains if there is to be a third or fourth heat in third or fourth heat.
5. A racer coming to second heat with one time forgiveness will be eliminated in case of a second offense. In a three-heat race (six runs), two offenses are permitted. In a four-heat race (eight runs), three offenses are permitted.
6. In case of odd number of competitors for second (third, fourth) heat the odd (slowest) racer would start solo first on red course.